

LANESAFE
TRAFFIC CONTROL

Date: May 13, 2019 **Author:** Katrina Seymour **DWG#:** 001

Comments:

Algra Bros
Jarrett Ens 604-825-2412

City of Chilliwack

Address: Princess Ave and Young Rg

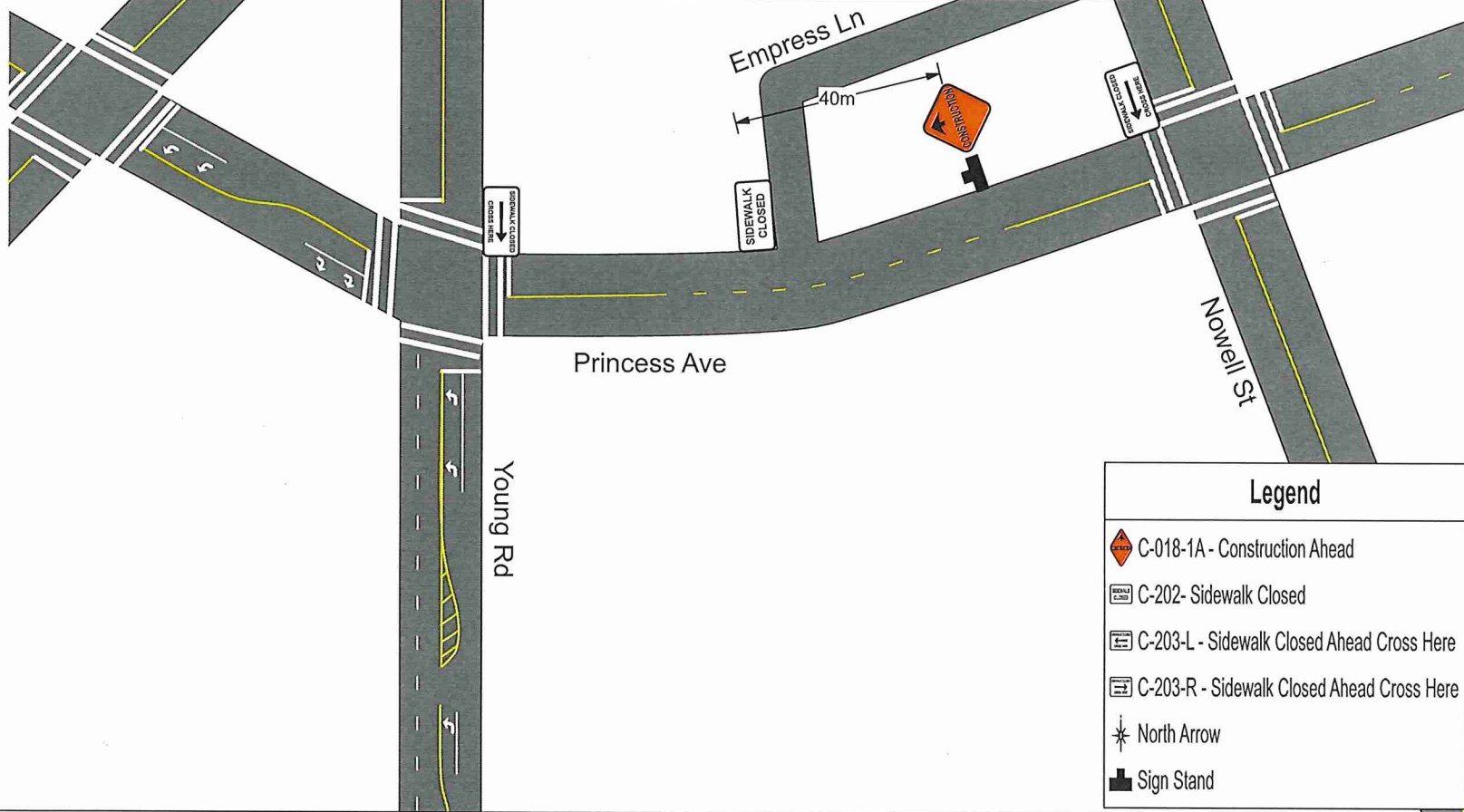
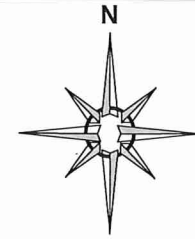
Scope of Work: sidewalk closure - construction hoarding will be brought to sidewalk edge

Closure Description: Sidewalk closure on the North side of Princess Ave

This plan is based on a 50 km/h roadway speed

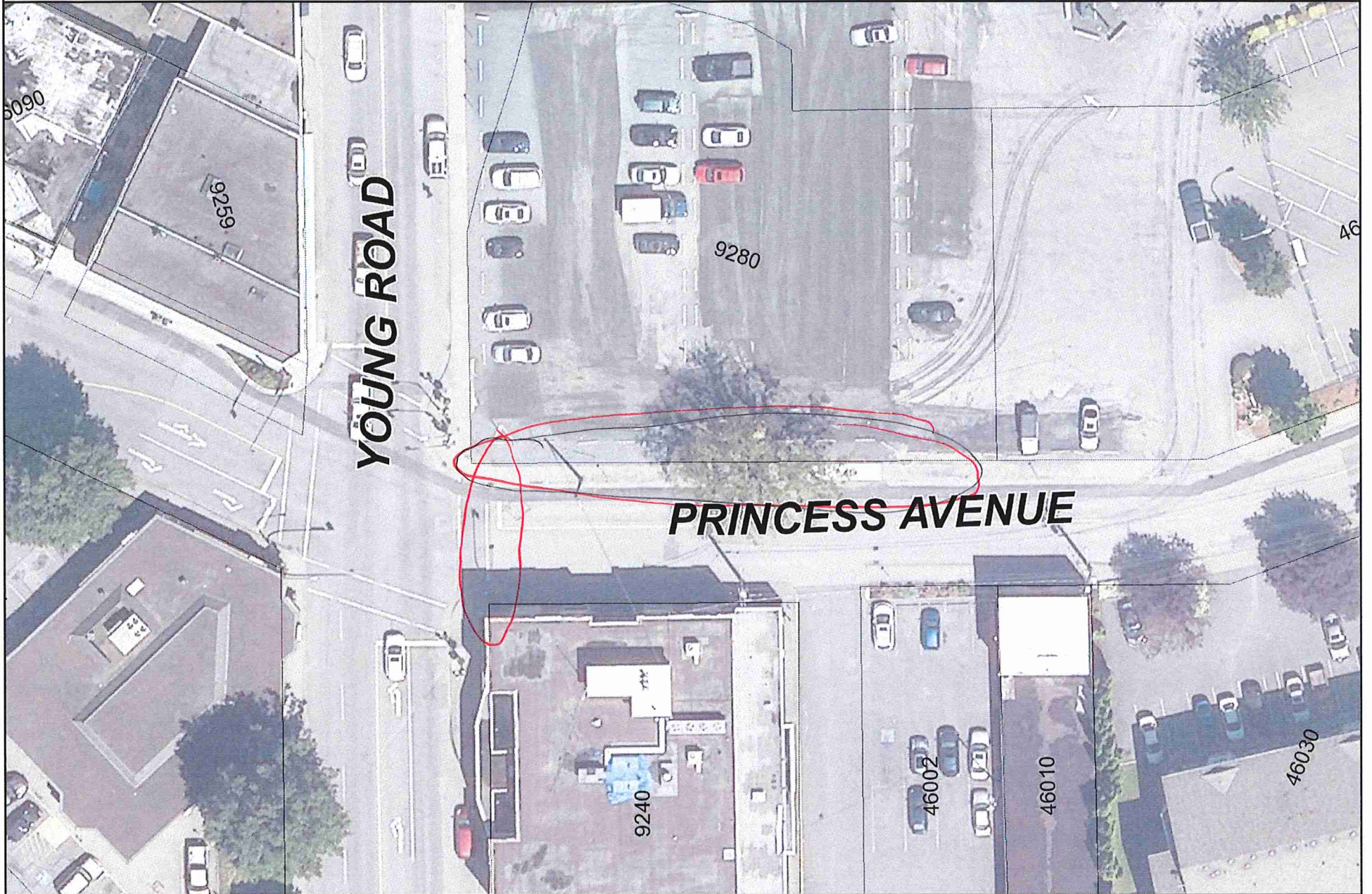
All specifications are based on the MOTi manual 2015 edition

www.invarion.com

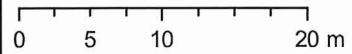


Legend

-  C-018-1A - Construction Ahead
-  C-202 - Sidewalk Closed
-  C-203-L - Sidewalk Closed Ahead Cross Here
-  C-203-R - Sidewalk Closed Ahead Cross Here
-  North Arrow
-  Sign Stand

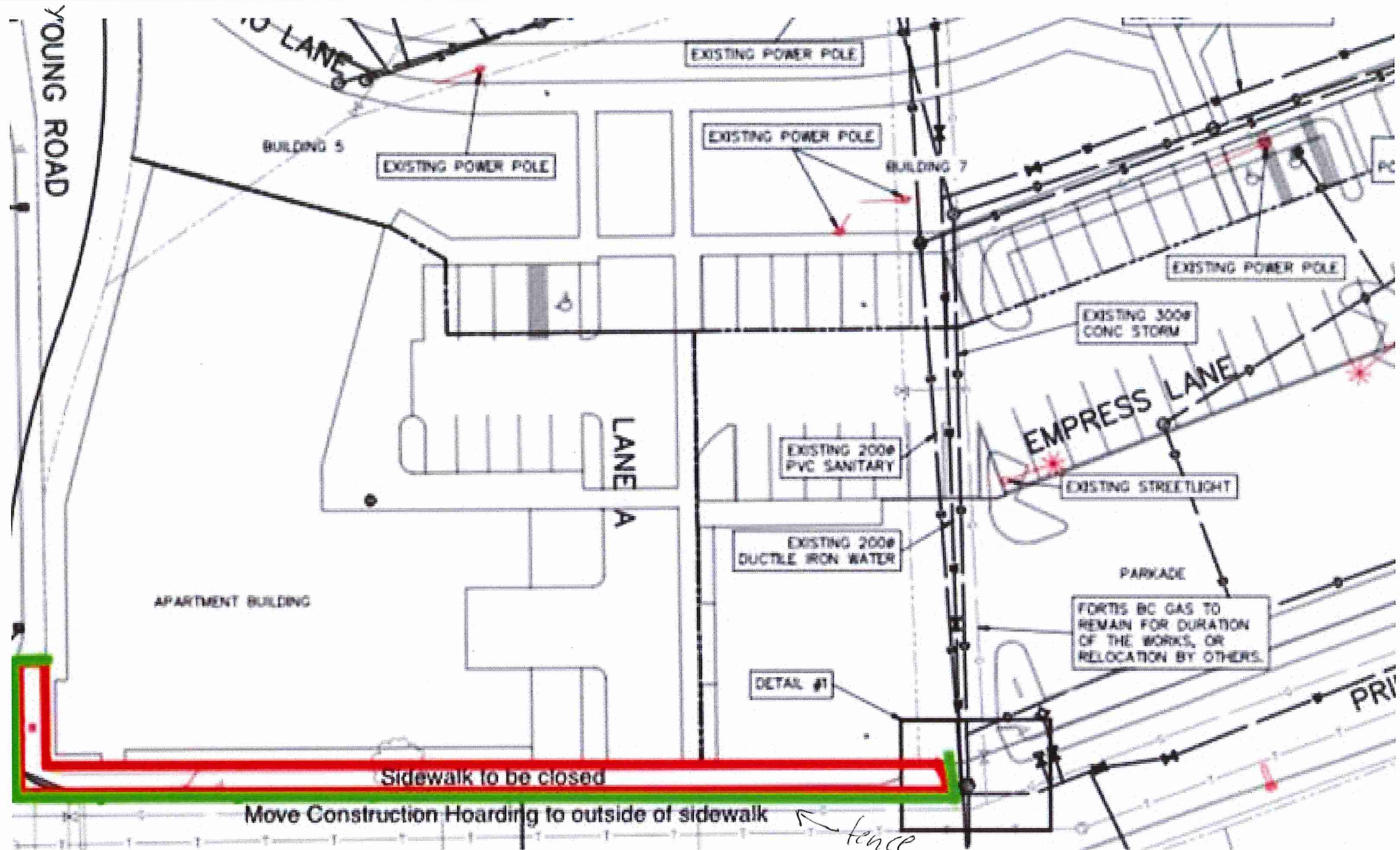


Scale: 1:500



Data accuracy not guaranteed





REV	DESCRIPTION	YYYY-MM-DD	BY	REV	DESCRIPTION	YYYY-MM-DD	BY
A	ISSUED FOR APPROVAL	2018-04-13	TMP				